

PERIMETER

SURVEYING & MAPPING
Certificate of Authorization No. LB7264
Prepared by: Jeff S. Hodapp, P.S.M.
949A Clint Moore Road
Boca Raton, Florida 33487
Tel: (561) 241-9988
Fax: (561) 241-5182

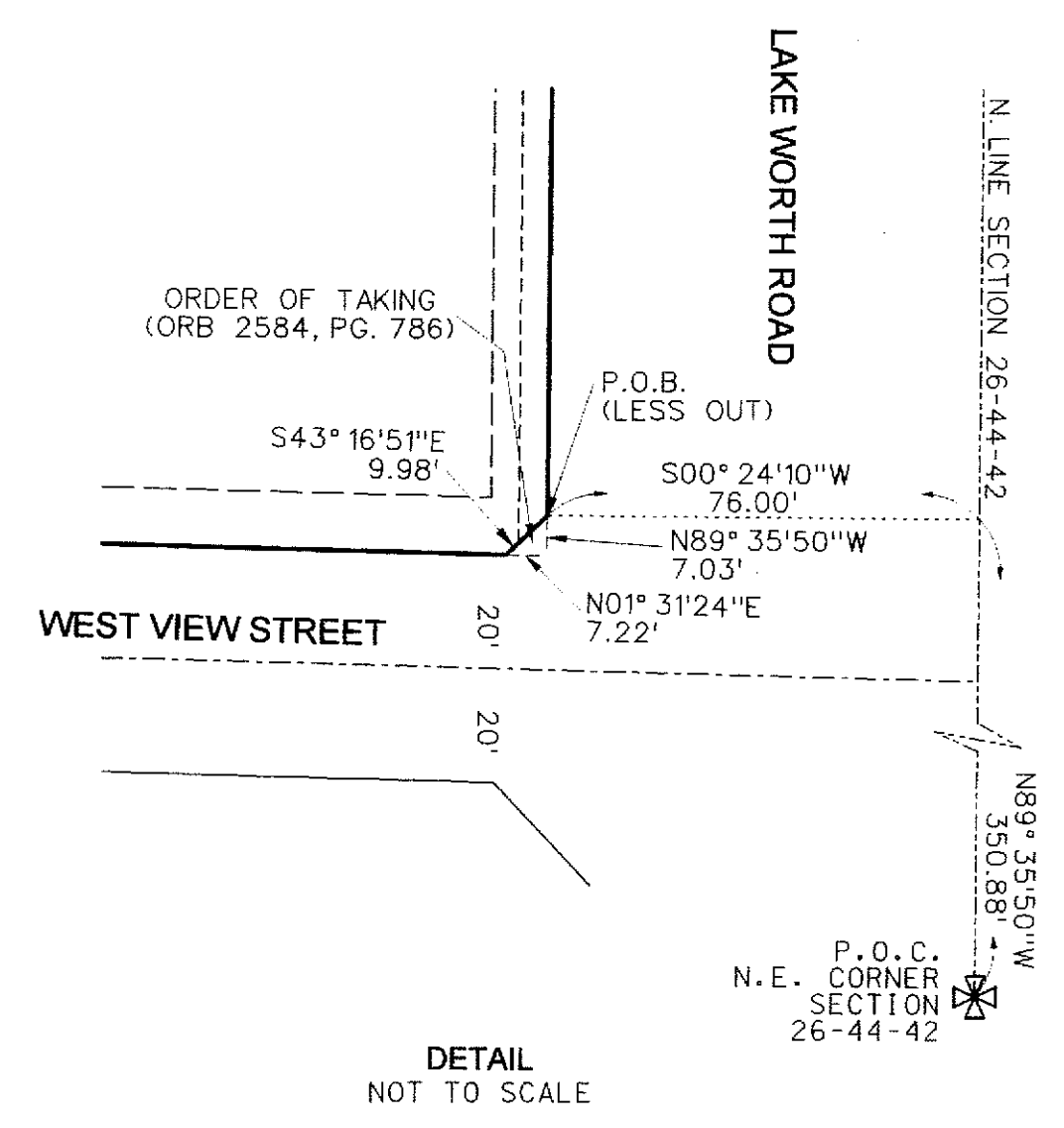
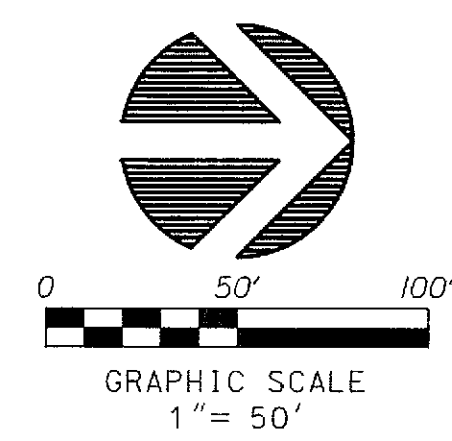
COLONIAL LAKES

A PORTION OF THE NORTHEAST ONE-QUARTER OF THE NORTHEAST ONE-QUARTER
OF SECTION 26, TOWNSHIP 44 SOUTH, RANGE 42 EAST,
PALM BEACH COUNTY, FLORIDA.
SEPTEMBER, 2011

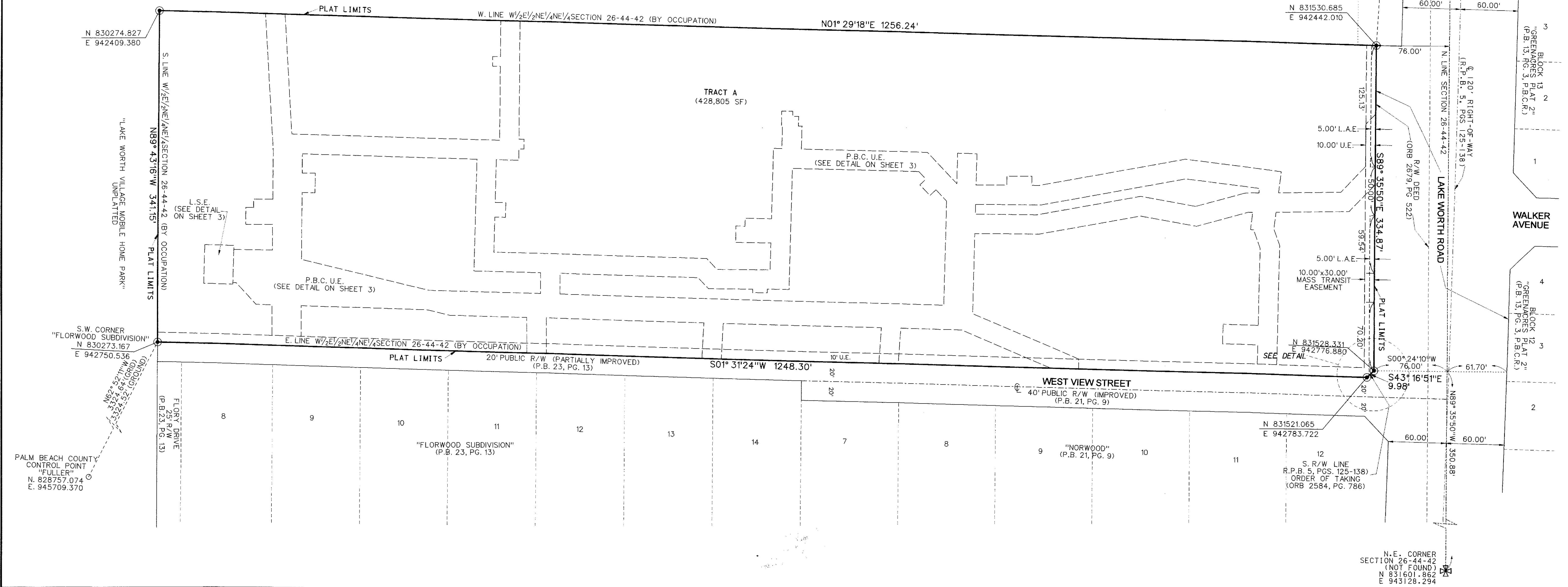
144

SHEET 2 OF 3

- LEGEND:**
- SET P.R.M. (UNLESS OTHERWISE NOTED) - ALUMINUM DISK IN 4" DIAMETER CONC. MON. STAMPED P.R.M. •LB7264 CENTERLINE
- ABBREVIATIONS:**
- AC. ACRES
 - B.E. BUFFER EASEMENT
 - CH CHORD
 - CHB CHORD BEARING
 - CONC. CONCRETE
 - COR. CORNER
 - D DELTA (CENTRAL ANGLE)
 - D.E. DRAINAGE EASEMENT
 - I.R. IRON ROD
 - I.R.C. IRON ROD AND CAP
 - L ARC LENGTH
 - L.A.E. LIMITED ACCESS EASEMENT
 - L.B. LICENSED BUSINESS
 - L.B.E. LANDSCAPE BUFFER EASEMENT
 - L.M.E. LAKE MAINTENANCE EASEMENT
 - L.M.A.E. LAKE MAINTENANCE ACCESS EASEMENT
 - L.S. LICENSED SURVEYOR
 - L.S.E. LIFT STATION EASEMENT
 - L.W.D.D. LAKE WORTH DRAINAGE DISTRICT MONUMENT
 - O.E. OVERHANG EASEMENT
 - O.R.B. OFFICIAL RECORDS BOOK
 - N.R. NON-RADIAL
 - P.B. PLAT BOOK
 - P.B.C. PALM BEACH COUNTY
 - P.B.C.R. PALM BEACH COUNTY RECORDS
 - P.E. PEDESTRIAN EASEMENT
 - PG. PAGE
 - P.O.B. POINT OF BEGINNING
 - P.O.C. POINT OF COMMENCEMENT
 - P.R.M. PERMANENT REFERENCE MONUMENT
 - P.S.M. PROFESSIONAL SURVEYOR & MAPPER
 - P.U.D. PLANNED UNIT DEVELOPMENT
 - R. RADIAL
 - R.P.B. ROAD PLAT BOOK
 - R.L. RADIAL LINE
 - R/W RIGHT-OF-WAY
 - SEC. SECTION
 - S.F. SQUARE FEET
 - U.E. UTILITY EASEMENT



"LAKE WORTH VILLAGE MOBILE HOME PARK" UNPLATTED



PALM BEACH COUNTY CONTROL POINT "FULLER" N. 828757.074 E. 945709.370

N.E. CORNER SECTION 26-44-42 (NOT FOUND) N 831601.862 E 943128.294